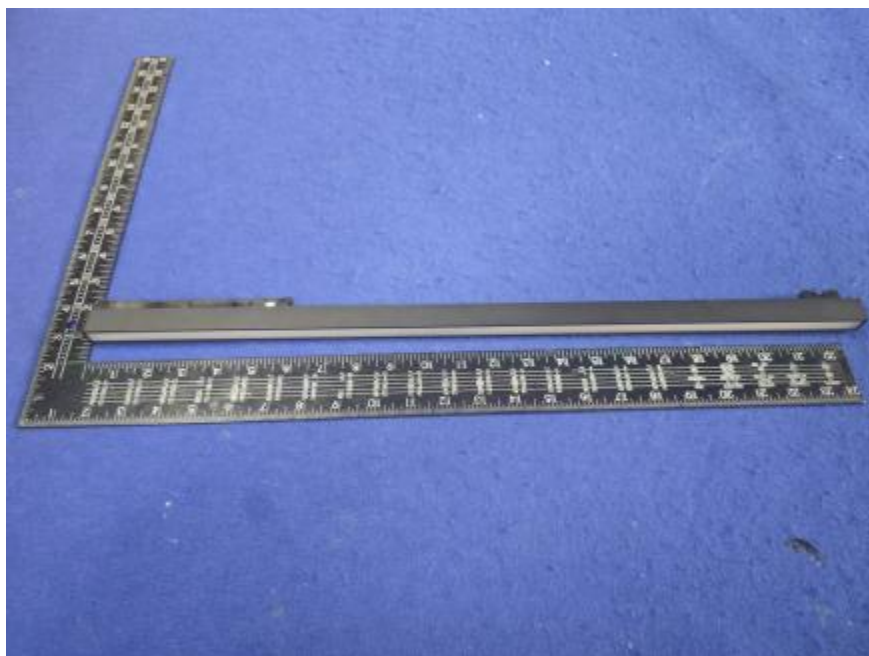


Luminaire Photograph



| | | |
|---------------------|-------|--------------------------|
| Light Output Ratio: | 48.7% | |
| Luminaire Power: | 11 W | |
| SHR Nominal: | 1.25 | Calculated using the TM5 |
| SHR Maximum: | 1.35 | fine grid method. |

C Range: 0 - 360DEG
C Interval: 30.0DEG
Test Speed: HIGH
Temperature: 25.3 °C
Operators: zoe
Test Date: 2025-1-21

Range: 0 - 180DEG
Interval: 1.0DEG
Test System: EVERFINE GO-SPEX500_V1 SYSTEM V2.00.461
Humidity: 65.0%
Test Distance: 3.160m [K=1.0000]
Remarks: LAMP: HL-A-2835D90W-2-S1-08L-HR5 Ra:90
PC: PL-0101B+PM-0145B
NOT DRIVER: 48V
30minutes warm-up

LUMINOUS INTENSITY DISTRIBUTION DIAGRAM

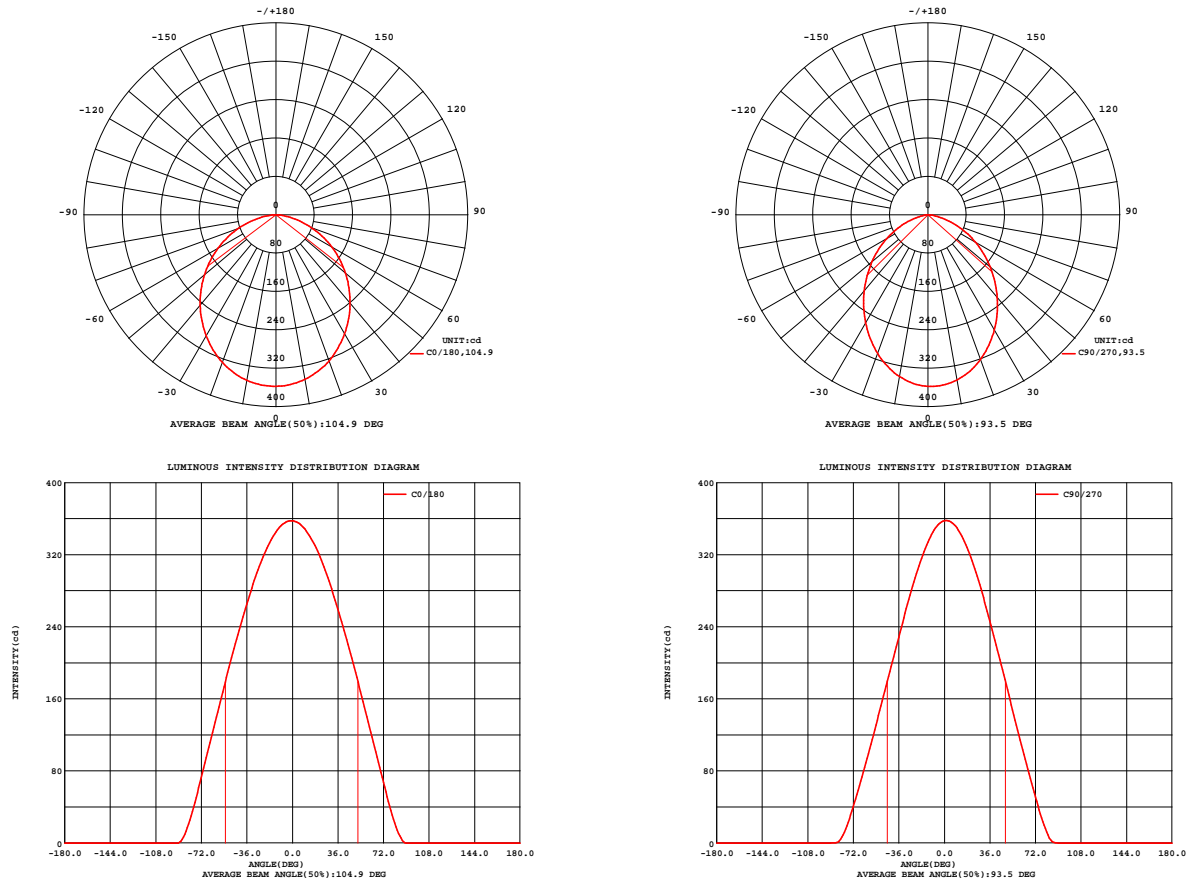


Fig. C0/C180

Fig. C90/C270

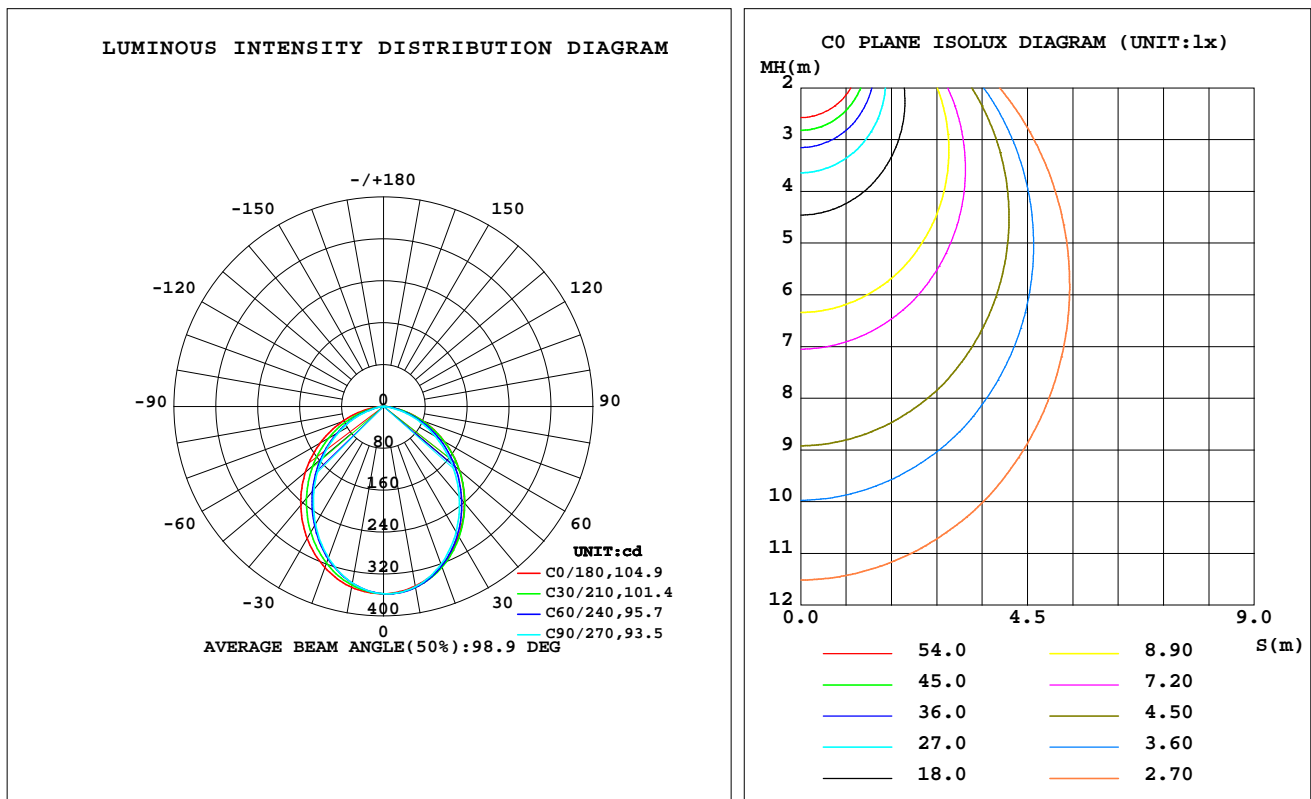
C Range: 0 - 360DEG
C Interval: 30.0DEG
Test Speed: HIGH
Temperature: 25.3 °C
Operators: zoe
Test Date: 2025-1-21

Range: 0 - 180DEG
Interval: 1.0DEG
Test System: EVERFINE GO-SPEX500_V1 SYSTEM V2.00.461
Humidity: 65.0%
Test Distance: 3.160m [K=1.0000]
Remarks: LAMP: HL-A-2835D90W-2-S1-08L-HR5 Ra: 90
PC: PL-0101B+PM-0145B
NOT DRIVER: 48V
30minutes warm-up

LUMINAIRE PHOTOMETRIC TEST REPORT

| | | |
|--|------------------|------------------------|
| Test:U:47.997V I:0.2291A P:10.996W PF:1.0000 Freq:0Hz Lamp Flux:1762.4x1 lm | | |
| NAME: OZ48-P2-6 | TYPE: | WEIGHT: |
| SPEC.: 3000K | DIM.: | SERIAL No.: 2501210023 |
| MFR.: RISE | SUR.: 0.009408m2 | Shielding Angle: |

| DATA OF LAMP | | PHOTOMETRIC DATA Eff: 78.09 lm/W | | | |
|------------------|--------|----------------------------------|--------|-----------------|----------|
| MODEL | HONGLI | I _{max} (cd) | 358.0 | S/MH(C0/180) | 1.22 |
| NOMINAL POWER(W) | 11 | LOR(%) | 48.7 | S/MH(C90/270) | 1.10 |
| RATED VOLTAGE(V) | 48 | TOTAL FLUX(lm) | 858.67 | UP,DN(C0-180) | 0.0,25.1 |
| NOMINAL FLUX(lm) | 1762.4 | CIE CLASS | DIRECT | UP,DN(C180-360) | 0.0,23.7 |
| LAMPS INSIDE | 1 | up(%) | 0.0 | CIBSE SHR NOM | 1.25 |
| TEST VOLTAGE(V) | 48 | down(%) | 48.7 | CIBSE SHR MAX | 1.35 |



C Range: 0 - 360DEG
C Interval: 30.0DEG
Test Speed: HIGH
Temperature:25.3℃
Operators:zoe
Test Date:2025-1-21

Range: 0 - 180DEG
Interval: 1.0DEG
Test System:EVERFINE GO-SPEX500_V1 SYSTEM V2.00.461
Humidity:65.0%
Test Distance:3.160m [K=1.0000]
Remarks: LAMP:HL-A-2835D90W-2-S1-08L-HR5 Ra:90
PC:PL-0101B+PM-0145B
NOT DRIVER:48V
30minutes warm-up

ZONAL FLUX DIAGRAM

ZONAL FLUX DIAGRAM:

| | C0 | C45 | C90 | C135 | C180 | C225 | C270 | C315 | | zone | total | %lum,lamp |
|-----|-----------------------|-------|-------|-------|-------|-------|-------|-------|---------|---------|-------|-----------|
| 10 | 348.2 | 350.8 | 349.7 | 349.5 | 350.5 | 344.4 | 342.4 | 345.9 | 0- 10 | 33.66 | 33.66 | 3.92,1.91 |
| 20 | 324.3 | 325.5 | 320.9 | 323.4 | 327.4 | 314.0 | 307.6 | 316.8 | 10- 20 | 94.57 | 128.2 | 14.9,7.28 |
| 30 | 286.5 | 285.7 | 277.2 | 283.3 | 291.4 | 270.5 | 260.1 | 274.4 | 20- 30 | 138.3 | 266.6 | 31,15.1 |
| 40 | 240.6 | 236.9 | 225.0 | 234.8 | 246.0 | 220.1 | 206.7 | 224.5 | 30- 40 | 159.2 | 425.7 | 49.6,24.2 |
| 50 | 189.2 | 183.4 | 169.8 | 181.5 | 194.7 | 166.5 | 152.3 | 171.1 | 40- 50 | 156.5 | 582.2 | 67.8,33 |
| 60 | 134.6 | 128.2 | 114.3 | 126.0 | 139.7 | 112.2 | 99.11 | 116.7 | 50- 60 | 132.8 | 715.0 | 83.3,40.6 |
| 70 | 78.42 | 72.99 | 61.20 | 70.45 | 83.29 | 59.03 | 48.96 | 63.39 | 60- 70 | 92.86 | 807.9 | 94.1,45.8 |
| 80 | 26.46 | 23.14 | 16.05 | 20.52 | 30.18 | 13.79 | 8.964 | 16.92 | 70- 80 | 44.27 | 852.2 | 99.2,48.4 |
| 90 | 0 | 0 | 0 | 0 | 0 | 0 | 0 | 0 | 80- 90 | 6.522 | 858.7 | 100,48.7 |
| 100 | 0 | 0 | 0 | 0 | 0 | 0 | 0 | 0 | 90-100 | 0 | 858.7 | 100,48.7 |
| 110 | 0 | 0 | 0 | 0 | 0 | 0 | 0 | 0 | 100-110 | 0 | 858.7 | 100,48.7 |
| 120 | 0 | 0 | 0 | 0 | 0 | 0 | 0 | 0 | 110-120 | 0 | 858.7 | 100,48.7 |
| 130 | 0 | 0 | 0 | 0 | 0 | 0 | 0 | 0 | 120-130 | 0 | 858.7 | 100,48.7 |
| 140 | 0 | 0 | 0 | 0 | 0 | 0 | 0 | 0 | 130-140 | 0 | 858.7 | 100,48.7 |
| 150 | 0 | 0 | 0 | 0 | 0 | 0 | 0 | 0 | 140-150 | 0 | 858.7 | 100,48.7 |
| 160 | 0 | 0 | 0 | 0 | 0 | 0 | 0 | 0 | 150-160 | 0 | 858.7 | 100,48.7 |
| 170 | 0 | 0 | 0 | 0 | 0 | 0 | 0 | 0 | 160-170 | 0 | 858.7 | 100,48.7 |
| 180 | 0 | 0 | 0 | 0 | 0 | 0 | 0 | 0 | 170-180 | 0 | 858.7 | 100,48.7 |
| DEG | LUMINOUS INTENSITY:cd | | | | | | | | | UNIT:lm | | |

C Range: 0 - 360DEG
C Interval: 30.0DEG
Test Speed: HIGH
Temperature:25.3℃
Operators:zoe
Test Date:2025-1-21

Range: 0 - 180DEG
Interval: 1.0DEG
Test System:EVERFINE GO-SPEX500_V1 SYSTEM V2.00.461
Humidity:65.0%
Test Distance:3.160m [K=1.0000]
Remarks: LAMP:HL-A-2835D90W-2-S1-08L-HR5 Ra:90
PC:PL-0101B+PM-0145B
NOT DRIVER:48V
30minutes warm-up

LUMINANCE LIMITATION CURVES

Test:U:47.997V I:0.2291A P:10.996W PF:1.0000 Freq:0Hz
Lamp Flux:1762.4x1 lm

NAME: OZ48-P2-6

TYPE:

WEIGHT:

SPEC.: 3000K

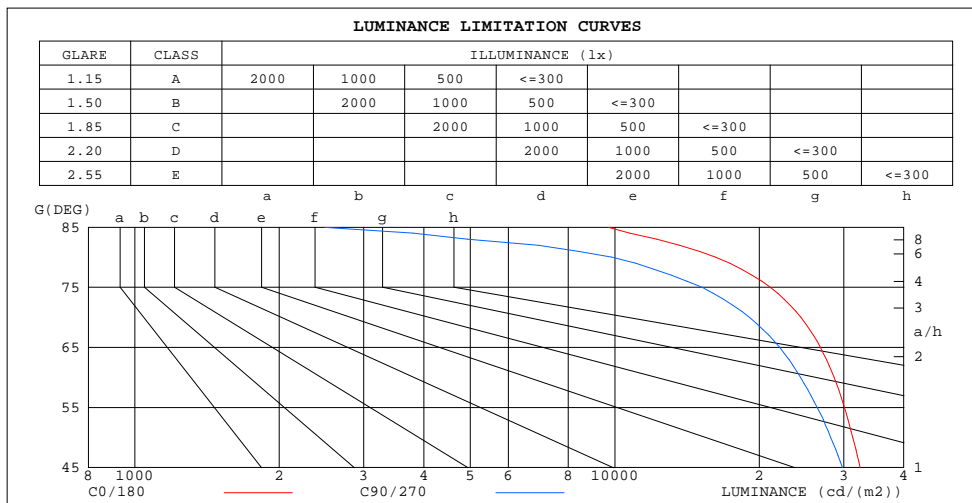
DIM.:

SERIAL No.: 2501210023

MFR.: RISE

SUR.: 0.009408m2

Shielding Angle:



| LUMINANCE cd/(m2) | | |
|-------------------|--------|---------|
| G(180) | C0/180 | C90/270 |
| 85 | 9705 | 2486 |
| 80 | 16213 | 9857 |
| 75 | 21075 | 15187 |
| 70 | 24399 | 19080 |
| 65 | 26817 | 22065 |
| 60 | 28636 | 24379 |
| 55 | 30069 | 26395 |
| 50 | 31317 | 28172 |
| 45 | 32429 | 29801 |

C Range: 0 - 360DEG
C Interval: 30.0DEG
Test Speed: HIGH
Temperature:25.3℃
Operators:zoe
Test Date:2025-1-21

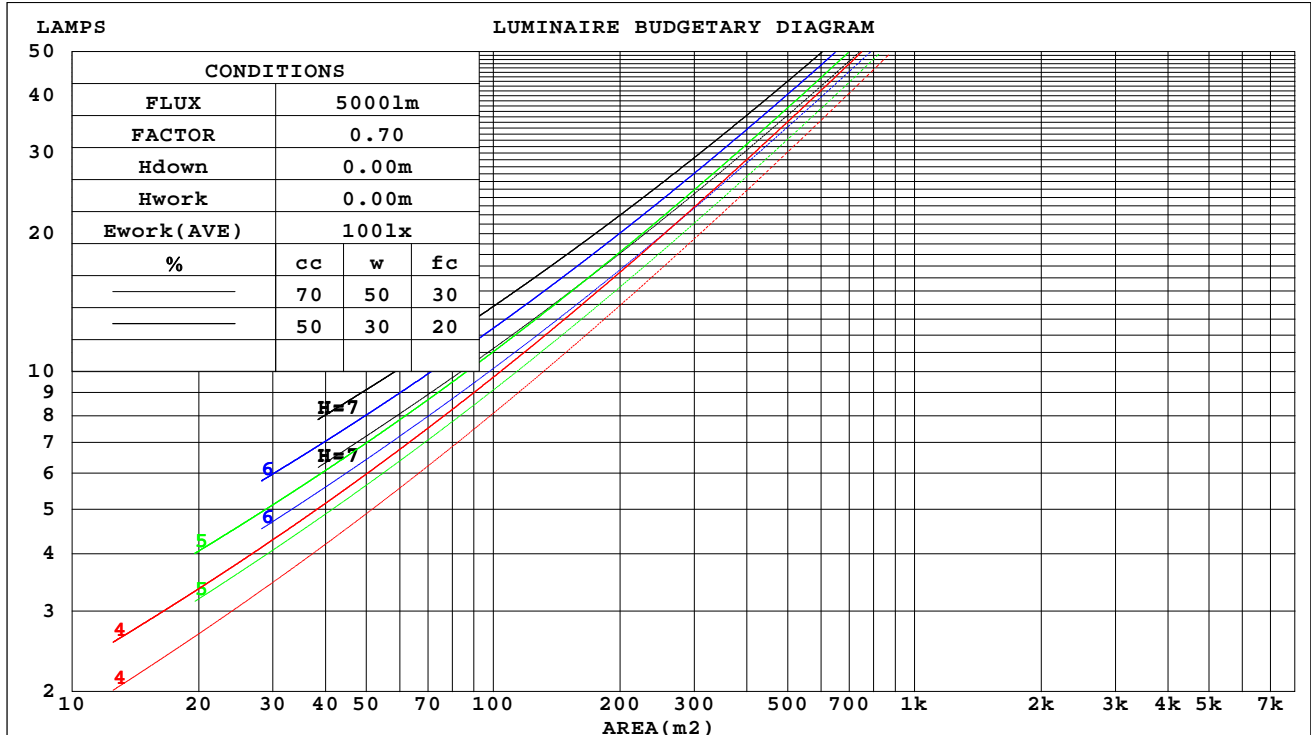
Range: 0 - 180DEG
Interval: 1.0DEG
Test System:EVERFINE GO-SPEX500_V1 SYSTEM V2.00.461
Humidity:65.0%
Test Distance:3.160m [K=1.0000]
Remarks: LAMP:HL-A-2835D90W-2-S1-08L-HR5 Ra:90
PC:PL-0101B+PM-0145B
NOT DRIVER:48V
30minutes warm-up

CU AND LUMINAIRE BUDGETARY ESTIMATE DIAGRAM

Test:U:47.997V I:0.2291A P:10.996W PF:1.0000 Freq:0Hz
Lamp Flux:1762.4x1 lm

| | | |
|-----------------|------------------|------------------------|
| NAME: OZ48-P2-6 | TYPE: | WEIGHT: |
| SPEC.: 3000K | DIM.: | SERIAL No.: 2501210023 |
| MFR.: RISE | SUR.: 0.009408m2 | Shielding Angle: |

| cc | 80% | | | 70% | | | 50% | | | 30% | | | 10% | | | 0 |
|-----|-----------------------|-----|-----|-----|-----|-----|-----|-----|-----|-----|-----|-----|-----|-----|-----|---|
| w | 50% | 30% | 10% | 50% | 30% | 10% | 50% | 30% | 10% | 50% | 30% | 10% | 50% | 30% | 10% | 0 |
| fc | 20% | | | 20% | | | 20% | | | 20% | | | 20% | | | 0 |
| RCR | RCR:Room Cavity Ratio | | | | | | | | | | | | | | | |



C Range: 0 - 360DEG
C Interval: 30.0DEG
Test Speed: HIGH
Temperature:25.3℃
Operators:zoe
Test Date:2025-1-21

Range: 0 - 180DEG
Interval: 1.0DEG
Test System:EVERFINE GO-SPEX500_V1 SYSTEM V2.00.461
Humidity:65.0%
Test Distance:3.160m [K=1.0000]
Remarks: LAMP:HL-A-2835D90W-2-S1-08L-HR5 Ra:90
PC:PL-0101B+PM-0145B
NOT DRIVER:48V
30minutes warm-up

WEC AND CCEC

| | | |
|--|------------------|------------------------|
| Test:U:47.997V I:0.2291A P:10.996W PF:1.0000 Freq:0Hz Lamp Flux:1762.4x1 lm | | |
| NAME: OZ48-P2-6 | TYPE: | WEIGHT: |
| SPEC.: 3000K | DIM.: | SERIAL No.: 2501210023 |
| MFR.: RISE | SUR.: 0.009408m2 | Shielding Angle: |

| cc | 80% | | | 70% | | | 50% | | | 30% | | | 10% | | | 0 |
|------|---|------|------|------|------|------|------|------|------|------|------|------|------|------|------|---|
| w | 50% | 30% | 10% | 50% | 30% | 10% | 50% | 30% | 10% | 50% | 30% | 10% | 50% | 30% | 10% | 0 |
| fc | 20% | | | 20% | | | 20% | | | 20% | | | 20% | | | 0 |
| RCR | RCR:Room Cavity Ratio Wall Exitance Coefficients(WEC) | | | | | | | | | | | | | | | |
| 0.0 | | | | | | | | | | | | | | | | |
| 1.0 | .137 | .078 | .025 | .134 | .076 | .024 | .128 | .073 | .023 | .122 | .070 | .023 | .116 | .067 | .022 | |
| 2.0 | .132 | .072 | .022 | .129 | .071 | .022 | .124 | .069 | .021 | .118 | .066 | .021 | .114 | .064 | .020 | |
| 3.0 | .124 | .066 | .020 | .121 | .065 | .020 | .116 | .063 | .019 | .112 | .061 | .019 | .107 | .059 | .018 | |
| 4.0 | .115 | .060 | .018 | .113 | .059 | .017 | .109 | .058 | .017 | .104 | .056 | .017 | .101 | .055 | .017 | |
| 5.0 | .107 | .055 | .016 | .105 | .054 | .016 | .101 | .053 | .016 | .098 | .052 | .015 | .094 | .050 | .015 | |
| 6.0 | .100 | .050 | .014 | .098 | .050 | .014 | .095 | .049 | .014 | .091 | .048 | .014 | .088 | .047 | .014 | |
| 7.0 | .093 | .046 | .013 | .092 | .046 | .013 | .089 | .045 | .013 | .086 | .044 | .013 | .083 | .043 | .013 | |
| 8.0 | .088 | .043 | .012 | .086 | .042 | .012 | .083 | .042 | .012 | .081 | .041 | .012 | .078 | .040 | .012 | |
| 9.0 | .082 | .040 | .011 | .081 | .039 | .011 | .078 | .039 | .011 | .076 | .038 | .011 | .074 | .038 | .011 | |
| 10.0 | .078 | .037 | .010 | .076 | .037 | .010 | .074 | .036 | .010 | .072 | .036 | .010 | .070 | .035 | .010 | |

| cc | 80% | | | 70% | | | 50% | | | 30% | | | 10% | | | 0 |
|------|--|------|------|------|------|------|------|------|------|------|------|------|------|------|------|---|
| w | 50% | 30% | 10% | 50% | 30% | 10% | 50% | 30% | 10% | 50% | 30% | 10% | 50% | 30% | 10% | 0 |
| fc | 20% | | | 20% | | | 20% | | | 20% | | | 20% | | | 0 |
| RCR | RCR:Room Cavity Ratio Ceiling Cavity Exitance Coefficients(CCEC) | | | | | | | | | | | | | | | |
| 0.0 | .093 | .093 | .093 | .079 | .079 | .079 | .054 | .054 | .054 | .031 | .031 | .031 | .010 | .010 | .010 | |
| 1.0 | .087 | .076 | .067 | .074 | .065 | .057 | .051 | .045 | .040 | .029 | .026 | .023 | .009 | .008 | .007 | |
| 2.0 | .083 | .064 | .049 | .071 | .055 | .042 | .048 | .038 | .030 | .028 | .022 | .017 | .009 | .007 | .006 | |
| 3.0 | .079 | .056 | .037 | .067 | .048 | .032 | .046 | .033 | .023 | .027 | .019 | .013 | .009 | .006 | .004 | |
| 4.0 | .075 | .049 | .029 | .064 | .042 | .025 | .044 | .030 | .018 | .026 | .017 | .011 | .008 | .006 | .003 | |
| 5.0 | .071 | .044 | .024 | .061 | .038 | .021 | .042 | .027 | .015 | .024 | .016 | .009 | .008 | .005 | .003 | |
| 6.0 | .068 | .040 | .020 | .058 | .034 | .017 | .040 | .024 | .012 | .023 | .014 | .007 | .008 | .005 | .002 | |
| 7.0 | .065 | .036 | .017 | .056 | .032 | .015 | .038 | .022 | .010 | .022 | .013 | .006 | .007 | .004 | .002 | |
| 8.0 | .062 | .034 | .014 | .053 | .029 | .013 | .037 | .020 | .009 | .021 | .012 | .005 | .007 | .004 | .002 | |
| 9.0 | .059 | .031 | .013 | .051 | .027 | .011 | .035 | .019 | .008 | .020 | .011 | .005 | .007 | .004 | .002 | |
| 10.0 | .056 | .029 | .011 | .048 | .025 | .010 | .034 | .018 | .007 | .020 | .011 | .004 | .006 | .003 | .001 | |

C Range: 0 - 360DEG
C Interval: 30.0DEG
Test Speed: HIGH
Temperature:25.3℃
Operators:zoe
Test Date:2025-1-21

Range: 0 - 180DEG
Interval: 1.0DEG
Test System:EVERFINE GO-SPEX500_V1 SYSTEM V2.00.461
Humidity:65.0%
Test Distance:3.160m [K=1.0000]
Remarks: LAMP:HL-A-2835D90W-2-S1-08L-HR5 Ra:90
PC:PL-0101B+PM-0145B
NOT DRIVER:48V
30minutes warm-up

UGR(Unified Glare Rating) Table

| | | | | | | | | | | |
|--|------------------|------|------|------|------------------|----------------|------|------------------------|------|------|
| Test:U:47.997V I:0.2291A P:10.996W PF:1.0000 Freq:0Hz Lamp Flux:1762.4x1 lm | | | | | | | | | | |
| NAME: OZ48-P2-6 | | | | | TYPE: | | | WEIGHT: | | |
| SPEC.: 3000K | | | | | DIM.: | | | SERIAL No.: 2501210023 | | |
| MFR.: RISE | | | | | SUR.: 0.009408m2 | | | Shielding Angle: | | |
| ceiling/cavity | 0.7 | 0.7 | 0.5 | 0.5 | 0.3 | 0.7 | 0.7 | 0.5 | 0.5 | 0.3 |
| walls | 0.5 | 0.3 | 0.5 | 0.3 | 0.3 | 0.5 | 0.3 | 0.5 | 0.3 | 0.3 |
| working plane | 0.2 | 0.2 | 0.2 | 0.2 | 0.2 | 0.2 | 0.2 | 0.2 | 0.2 | 0.2 |
| Room dimensions | Viewed crosswise | | | | | Viewed endwise | | | | |
| x = 2H y = 2H | 22.9 | 24.3 | 23.1 | 24.5 | 24.7 | 22.2 | 23.7 | 22.5 | 23.9 | 24.1 |
| 3H | 24.2 | 25.5 | 24.5 | 25.8 | 26.0 | 23.4 | 24.7 | 23.6 | 24.9 | 25.2 |
| 4H | 24.7 | 25.9 | 25.0 | 26.2 | 26.4 | 23.7 | 25.0 | 24.0 | 25.2 | 25.5 |
| 6H | 24.9 | 26.1 | 25.3 | 26.4 | 26.7 | 23.8 | 25.0 | 24.1 | 25.3 | 25.6 |
| 8H | 25.0 | 26.1 | 25.3 | 26.4 | 26.7 | 23.8 | 25.0 | 24.1 | 25.2 | 25.5 |
| 12H | 25.0 | 26.1 | 25.3 | 26.4 | 26.7 | 23.8 | 24.9 | 24.1 | 25.2 | 25.5 |
| 4H 2H | 23.3 | 24.6 | 23.7 | 24.9 | 25.1 | 22.9 | 24.1 | 23.2 | 24.4 | 24.6 |
| 3H | 24.9 | 26.0 | 25.2 | 26.3 | 26.6 | 24.1 | 25.3 | 24.5 | 25.5 | 25.8 |
| 4H | 25.5 | 26.5 | 25.8 | 26.8 | 27.1 | 24.6 | 25.6 | 25.0 | 25.9 | 26.2 |
| 6H | 25.8 | 26.7 | 26.2 | 27.1 | 27.4 | 24.8 | 25.7 | 25.2 | 26.0 | 26.4 |
| 8H | 25.9 | 26.7 | 26.3 | 27.1 | 27.5 | 24.8 | 25.6 | 25.2 | 26.0 | 26.4 |
| 12H | 25.9 | 26.7 | 26.4 | 27.1 | 27.5 | 24.8 | 25.5 | 25.2 | 25.9 | 26.3 |
| 8H 4H | 25.6 | 26.4 | 26.0 | 26.8 | 27.2 | 24.8 | 25.6 | 25.2 | 26.0 | 26.4 |
| 6H | 26.1 | 26.8 | 26.5 | 27.2 | 27.6 | 25.1 | 25.8 | 25.5 | 26.2 | 26.6 |
| 8H | 26.2 | 26.8 | 26.7 | 27.2 | 27.7 | 25.1 | 25.8 | 25.6 | 26.2 | 26.6 |
| 12H | 26.3 | 26.8 | 26.7 | 27.2 | 27.7 | 25.1 | 25.7 | 25.6 | 26.1 | 26.6 |
| 12H 4H | 25.6 | 26.3 | 26.0 | 26.7 | 27.1 | 24.8 | 25.6 | 25.2 | 26.0 | 26.4 |
| 6H | 26.1 | 26.7 | 26.5 | 27.1 | 27.6 | 25.1 | 25.7 | 25.6 | 26.2 | 26.6 |
| 8H | 26.2 | 26.7 | 26.7 | 27.2 | 27.7 | 25.2 | 25.7 | 25.7 | 26.2 | 26.6 |
| Variations with the observer position at spacings(CIE Pub.117): | | | | | | | | | | |
| S = 1.0H | + 0.2 / - 0.2 | | | | | + 0.3 / - 0.3 | | | | |
| 1.5H | + 0.2 / - 0.3 | | | | | + 0.2 / - 0.4 | | | | |
| 2.0H | + 0.3 / - 0.3 | | | | | + 0.3 / - 0.5 | | | | |

CIE Pub.117, 1762 lm Total Lamp Luminous Flux Correct (8log(F/F0) = 2.0)
Area: 0.009408 m2

C Range: 0 - 360DEG
C Interval: 30.0DEG
Test Speed: HIGH
Temperature:25.3℃
Operators:zoe
Test Date:2025-1-21

Range: 0 - 180DEG
Interval: 1.0DEG
Test System:EVERFINE GO-SPEX500_V1 SYSTEM V2.00.461
Humidity:65.0%
Test Distance:3.160m [K=1.0000]
Remarks: LAMP:HL-A-2835D90W-2-S1-08L-HR5 Ra:90
PC:PL-0101B+PM-0145B
NOT DRIVER:48V
30minutes warm-up

UTILIZATION FACTORS TABLE

| | | |
|--|------------------|------------------------|
| Test:U:47.997V I:0.2291A P:10.996W PF:1.0000 Freq:0Hz Lamp Flux:1762.4x1 lm | | |
| NAME: OZ48-P2-6 | TYPE: | WEIGHT: |
| SPEC.: 3000K | DIM.: | SERIAL No.: 2501210023 |
| MFR.: RISE | SUR.: 0.009408m2 | Shielding Angle: |

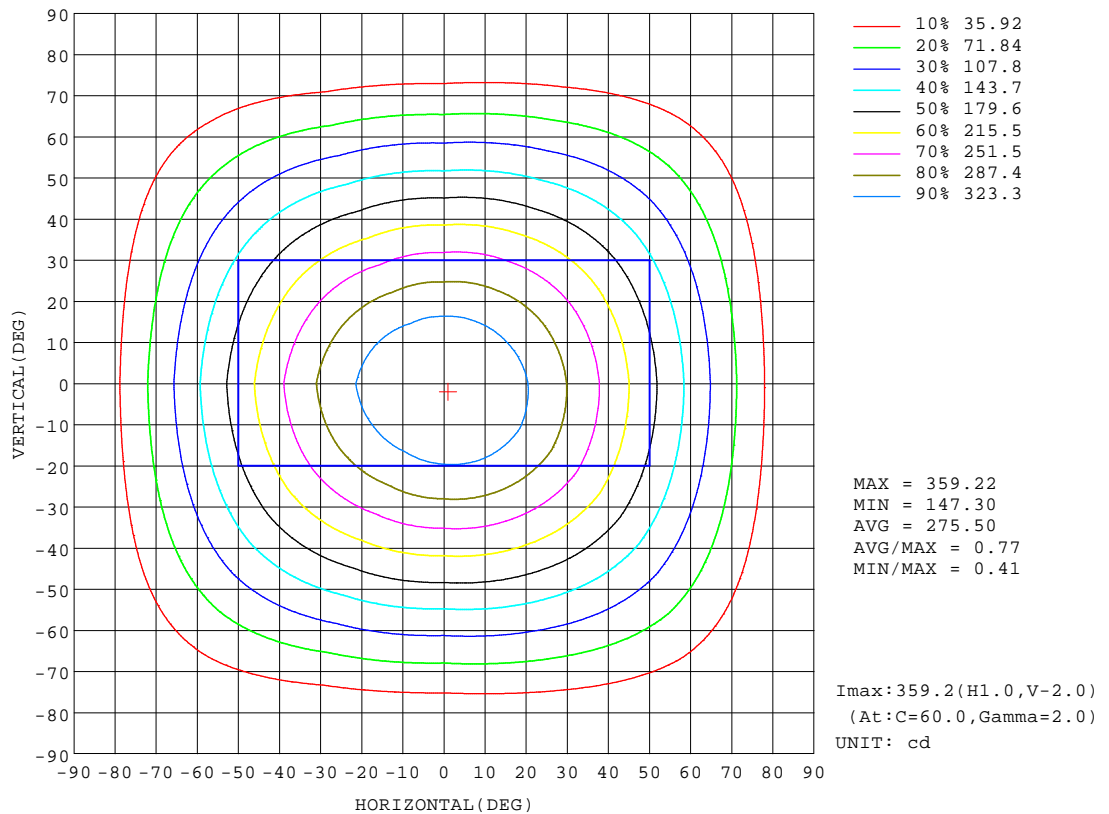
| REFLECTANCE | | | | | | | | | | |
|----------------------------------|---|-----|-----------|-----|-----|-----|-----|---------------|-----|--------|
| Ceiling | 0.8 | 0.8 | 0.8 | 0.7 | 0.7 | 0.7 | 0.5 | 0.5 | 0.5 | 0 |
| Walls | 0.7 | 0.5 | 0.3 | 0.7 | 0.5 | 0.3 | 0.7 | 0.5 | 0.3 | 0 |
| Working plane | 0.2 | 0.2 | 0.2 | 0.2 | 0.2 | 0.2 | 0.2 | 0.2 | 0.2 | 0 |
| ROOM INDEX | UTILIZATION FACTORS(PERCENT) $k(RI) \times RCR = 5$ | | | | | | | | | |
| k = 0.60 | 29 | 24 | 21 | 29 | 24 | 21 | 28 | 24 | 21 | 18 |
| 0.80 | 34 | 29 | 26 | 34 | 29 | 25 | 33 | 28 | 25 | 22 |
| 1.00 | 38 | 33 | 30 | 38 | 33 | 30 | 37 | 34 | 30 | 26 |
| 1.25 | 42 | 37 | 34 | 41 | 37 | 34 | 40 | 36 | 33 | 30 |
| 1.50 | 44 | 40 | 36 | 43 | 39 | 36 | 42 | 38 | 36 | 32 |
| 2.00 | 47 | 43 | 41 | 46 | 43 | 40 | 45 | 42 | 39 | 36 |
| 2.50 | 49 | 46 | 43 | 48 | 45 | 42 | 46 | 44 | 42 | 38 |
| 3.00 | 51 | 48 | 45 | 50 | 47 | 45 | 48 | 45 | 43 | 40 |
| 4.00 | 52 | 50 | 48 | 51 | 49 | 47 | 49 | 47 | 46 | 42 |
| 5.00 | 53 | 51 | 50 | 52 | 50 | 49 | 50 | 49 | 47 | 43 |
| ROOM INDEX | UF(total) | | | | | | | | | Direct |
| According to DIN EN 13032-2 2004 | | | Suspended | | | | | SHRNOM = 1.25 | | |

C Range: 0 - 360DEG
C Interval: 30.0DEG
Test Speed: HIGH
Temperature:25.3℃
Operators:zoe
Test Date:2025-1-21

Range: 0 - 180DEG
Interval: 1.0DEG
Test System:EVERFINE GO-SPEX500_V1 SYSTEM V2.00.461
Humidity:65.0%
Test Distance:3.160m [K=1.0000]
Remarks: LAMP:HL-A-2835D90W-2-S1-08L-HR5 Ra:90
PC:PL-0101B+PM-0145B
NOT DRIVER:48V
30minutes warm-up

ISOCANDELA DIAGRAM

| | | |
|--|------------------|------------------------|
| Test:U:47.997V I:0.2291A P:10.996W PF:1.0000 Freq:0Hz Lamp Flux:1762.4x1 lm | | |
| NAME: OZ48-P2-6 | TYPE: | WEIGHT: |
| SPEC.: 3000K | DIM.: | SERIAL No.: 2501210023 |
| MFR.: RISE | SUR.: 0.009408m2 | Shielding Angle: |

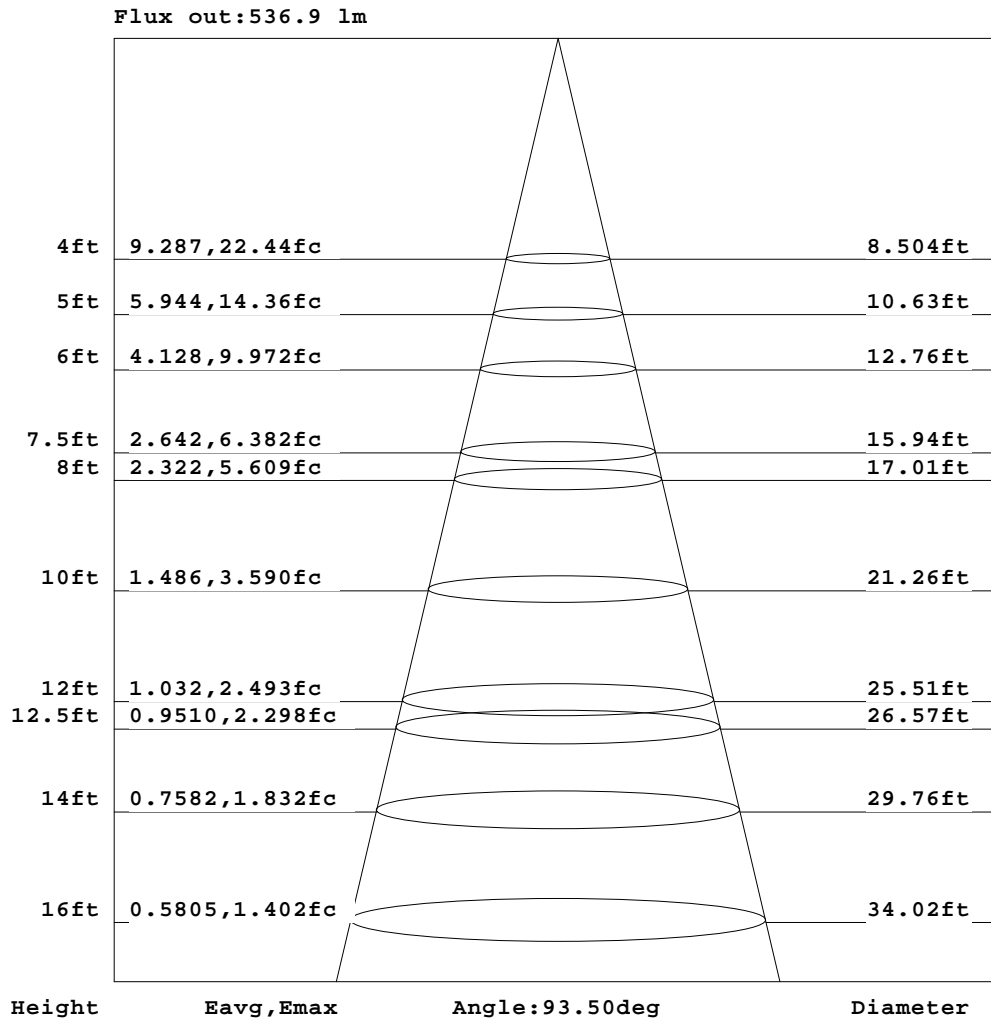


C Range: 0 - 360DEG
C Interval: 30.0DEG
Test Speed: HIGH
Temperature: 25.3 °C
Operators: zoe
Test Date: 2025-1-21

Range: 0 - 180DEG
Interval: 1.0DEG
Test System: EVERFINE GO-SPEX500_V1 SYSTEM V2.00.461
Humidity: 65.0%
Test Distance: 3.160m [K=1.0000]
Remarks: LAMP: HL-A-2835D90W-2-S1-08L-HR5 Ra: 90
PC: PL-0101B+PM-0145B
NOT DRIVER: 48V
30minutes warm-up

AAI Figure

| | | |
|--|------------------|------------------------|
| Test:U:47.997V I:0.2291A P:10.996W PF:1.0000 Freq:0Hz Lamp Flux:1762.4x1 lm | | |
| NAME: OZ48-P2-6 | TYPE: | WEIGHT: |
| SPEC.: 3000K | DIM.: | SERIAL No.: 2501210023 |
| MFR.: RISE | SUR.: 0.009408m2 | Shielding Angle: |



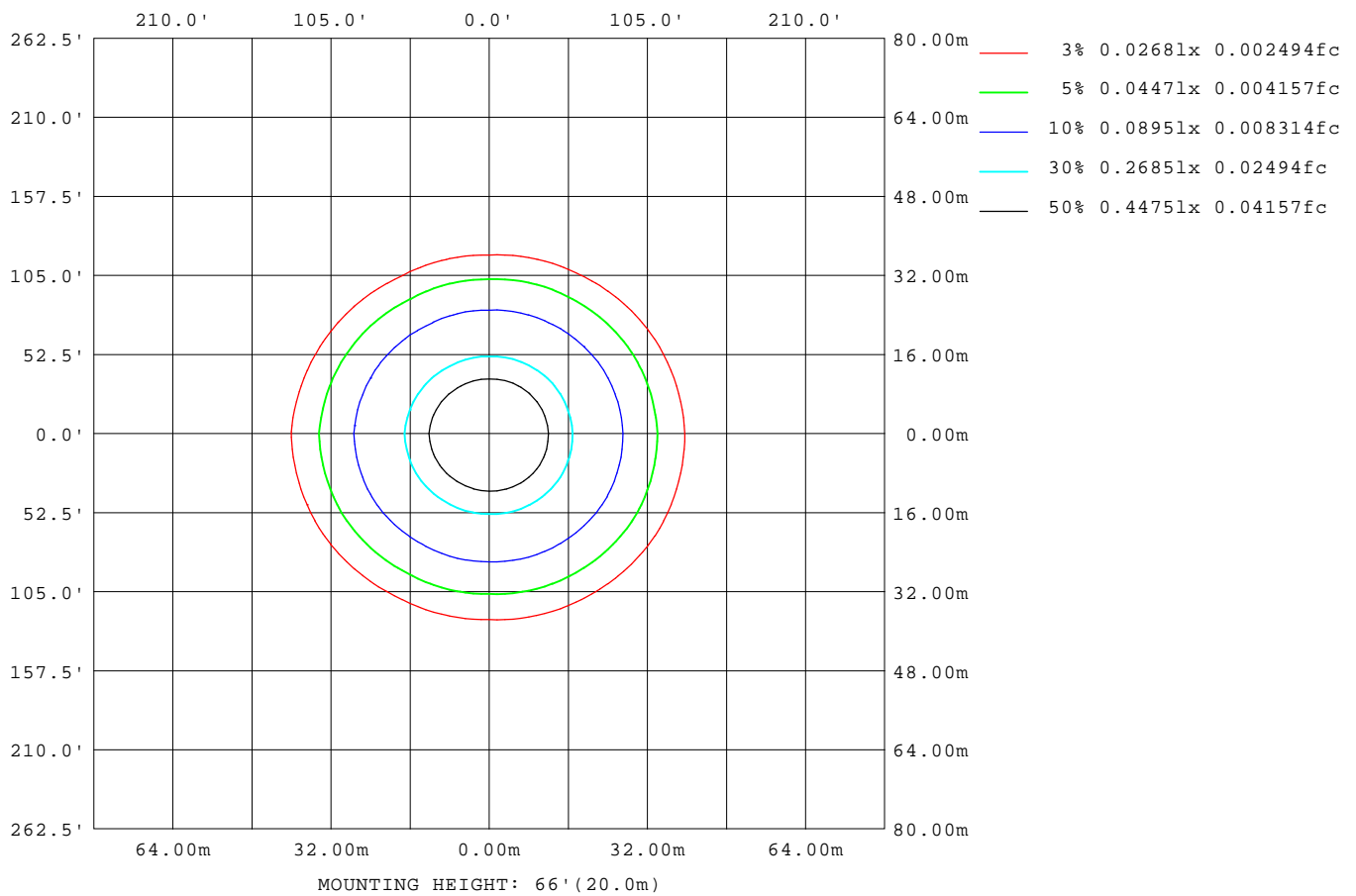
Note: The Curves indicate the illuminated area and the average illumination when the luminaire is at different distance.

C Range: 0 - 360DEG
C Interval: 30.0DEG
Test Speed: HIGH
Temperature: 25.3°C
Operators: zoe
Test Date: 2025-1-21

Range: 0 - 180DEG
Interval: 1.0DEG
Test System: EVERFINE GO-SPEX500_V1 SYSTEM V2.00.461
Humidity: 65.0%
Test Distance: 3.160m [K=1.0000]
Remarks: LAMP: HL-A-2835D90W-2-S1-08L-HR5 Ra: 90
PC: PL-0101B+PM-0145B
NOT DRIVER: 48V
30minutes warm-up

ISOLUX DIAGRAM

| | | |
|--|------------------|------------------------|
| Test:U:47.997V I:0.2291A P:10.996W PF:1.0000 Freq:0Hz Lamp Flux:1762.4x1 lm | | |
| NAME: OZ48-P2-6 | TYPE: | WEIGHT: |
| SPEC.: 3000K | DIM.: | SERIAL No.: 2501210023 |
| MFR.: RISE | SUR.: 0.009408m2 | Shielding Angle: |



C Range: 0 - 360DEG
C Interval: 30.0DEG
Test Speed: HIGH
Temperature: 25.3 °C
Operators: zoe
Test Date: 2025-1-21

Range: 0 - 180DEG
Interval: 1.0DEG
Test System: EVERFINE GO-SPEX500_V1 SYSTEM V2.00.461
Humidity: 65.0%
Test Distance: 3.160m [K=1.0000]
Remarks: LAMP: HL-A-2835D90W-2-S1-08L-HR5 Ra: 90
PC: PL-0101B+PM-0145B
NOT DRIVER: 48V
30minutes warm-up

LED Avg.L Report

| | | |
|--|------------------|------------------------|
| Test:U:47.997V I:0.2291A P:10.996W PF:1.0000 Freq:0Hz Lamp Flux:1762.4x1 lm | | |
| NAME: OZ48-P2-6 | TYPE: | WEIGHT: |
| SPEC.: 3000K | DIM.: | SERIAL No.: 2501210023 |
| MFR.: RISE | SUR.: 0.009408m2 | Shielding Angle: |

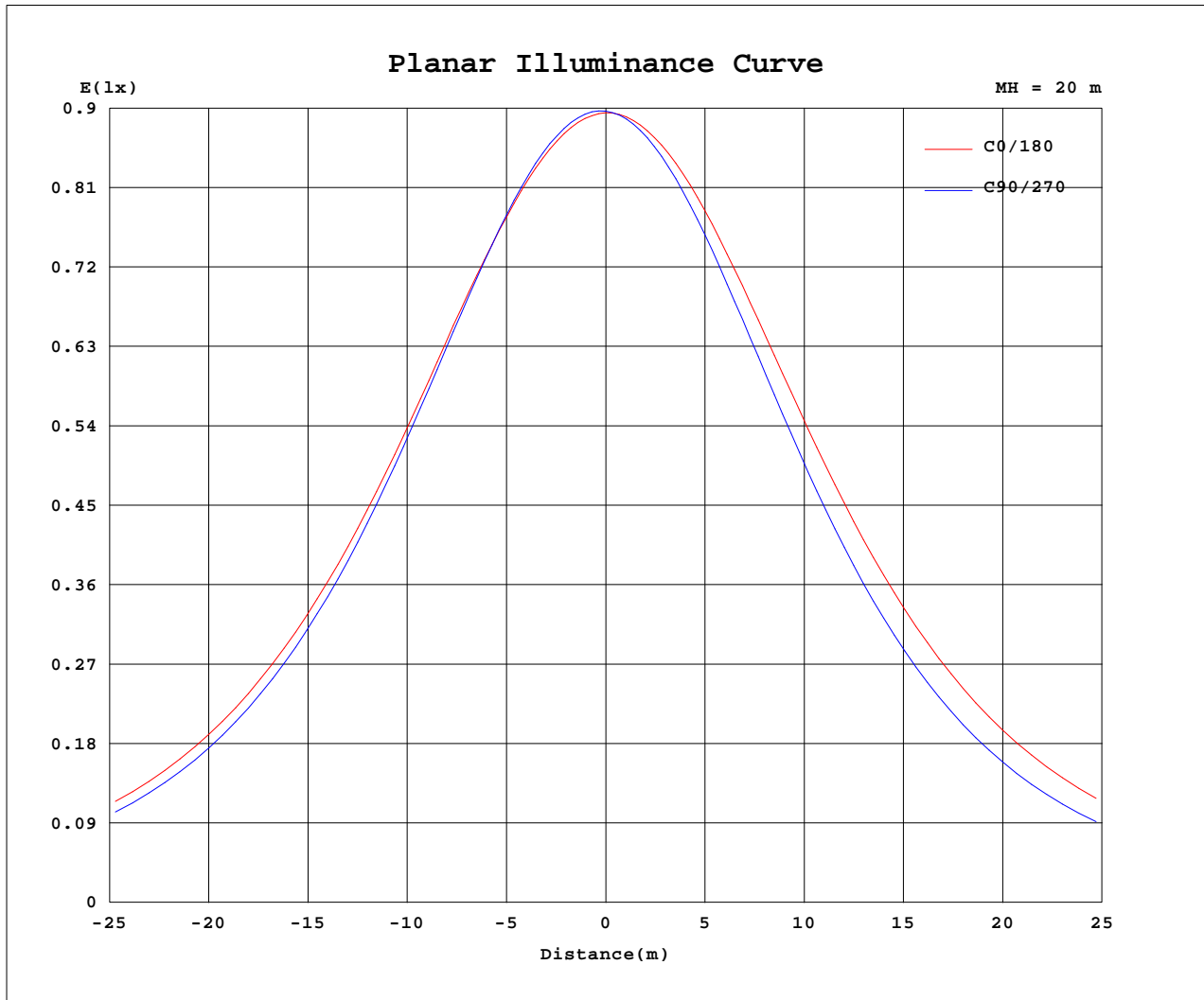
| AvgL | cd/m2 |
|----------------|-------|
| L_0~180(65)av | 27415 |
| L_0~180(75)av | 21966 |
| L_0~180(85)av | 10673 |
| L_90~270(65)av | 20245 |
| L_90~270(75)av | 13092 |
| L_90~270(85)av | 1535 |
| L_45(65)av | 23471 |
| L_45(75)av | 16733 |
| L_45(85)av | 3881 |

Standard: GB/T 29293-2012

C Range: 0 - 360DEG
C Interval: 30.0DEG
Test Speed: HIGH
Temperature:25.3℃
Operators:zoe
Test Date:2025-1-21

Range: 0 - 180DEG
Interval: 1.0DEG
Test System:EVERFINE GO-SPEX500_V1 SYSTEM V2.00.461
Humidity:65.0%
Test Distance:3.160m [K=1.0000]
Remarks: LAMP:HL-A-2835D90W-2-S1-08L-HR5 Ra:90
PC:PL-0101B+PM-0145B
NOT DRIVER:48V
30minutes warm-up

Planar Illuminance Curve



C Range: 0 - 360DEG
 C Interval: 30.0DEG
 Test Speed: HIGH
 Temperature: 25.3 °C
 Operators: zoe
 Test Date: 2025-1-21

Range: 0 - 180DEG
 Interval: 1.0DEG
 Test System: EVERFINE GO-SPEX500_V1 SYSTEM V2.00.461
 Humidity: 65.0%
 Test Distance: 3.160m [K=1.0000]
 Remarks: LAMP: HL-A-2835D90W-2-S1-08L-HR5 Ra:90
 PC: PL-0101B+PM-0145B
 NOT DRIVER: 48V
 30minutes warm-up

LUMINOUS DISTRIBUTION INTENSITY DATA

| | | |
|--|------------------|------------------------|
| Test:U:47.997V I:0.2291A P:10.996W PF:1.0000 Freq:0Hz Lamp Flux:1762.4x1 lm | | |
| NAME: OZ48-P2-6 | TYPE: | WEIGHT: |
| SPEC.: 3000K | DIM.: | SERIAL No.: 2501210023 |
| MFR.: RISE | SUR.: 0.009408m2 | Shielding Angle: |

Table--1

UNIT: cd

| C(DEG) (DEG) | 0 | 30 | 60 | 90 | 120 | 150 | 180 | 210 | 240 | 270 | 300 | 330 | | | | | | |
|-----------------|------|------|------|------|------|------|------|------|------|------|------|------|--|--|--|--|--|--|
| 0 | 358 | 358 | 358 | 358 | 358 | 358 | 358 | 358 | 358 | 358 | 358 | 358 | | | | | | |
| 5 | 355 | 356 | 357 | 357 | 356 | 356 | 356 | 354 | 353 | 353 | 354 | 354 | | | | | | |
| 10 | 348 | 351 | 351 | 350 | 349 | 350 | 350 | 346 | 343 | 342 | 345 | 347 | | | | | | |
| 15 | 338 | 341 | 340 | 338 | 337 | 340 | 341 | 335 | 328 | 327 | 331 | 335 | | | | | | |
| 20 | 324 | 327 | 324 | 321 | 321 | 326 | 327 | 318 | 310 | 308 | 313 | 320 | | | | | | |
| 25 | 306 | 309 | 305 | 300 | 302 | 308 | 311 | 299 | 288 | 285 | 292 | 302 | | | | | | |
| 30 | 286 | 289 | 283 | 277 | 279 | 288 | 291 | 278 | 263 | 260 | 269 | 280 | | | | | | |
| 35 | 264 | 266 | 258 | 252 | 254 | 265 | 270 | 254 | 238 | 234 | 243 | 257 | | | | | | |
| 40 | 241 | 241 | 232 | 225 | 229 | 241 | 246 | 229 | 211 | 207 | 217 | 232 | | | | | | |
| 45 | 215 | 216 | 206 | 198 | 202 | 215 | 221 | 203 | 184 | 180 | 190 | 206 | | | | | | |
| 50 | 189 | 189 | 178 | 170 | 174 | 189 | 195 | 176 | 157 | 152 | 163 | 179 | | | | | | |
| 55 | 162 | 162 | 150 | 142 | 147 | 161 | 167 | 149 | 130 | 126 | 136 | 152 | | | | | | |
| 60 | 135 | 134 | 123 | 114 | 119 | 133 | 140 | 121 | 103 | 99.1 | 109 | 125 | | | | | | |
| 65 | 107 | 106 | 95.4 | 87.5 | 91.8 | 105 | 111 | 93.9 | 76.6 | 73.5 | 82.5 | 97.1 | | | | | | |
| 70 | 78.4 | 77.5 | 68.5 | 61.2 | 63.9 | 77.0 | 83.3 | 66.7 | 51.4 | 49.0 | 57.0 | 69.8 | | | | | | |
| 75 | 51.3 | 50.5 | 43.0 | 36.9 | 38.5 | 49.6 | 55.7 | 40.8 | 28.4 | 26.9 | 33.3 | 43.8 | | | | | | |
| 80 | 26.5 | 25.8 | 20.5 | 16.1 | 16.5 | 24.5 | 30.2 | 18.0 | 9.55 | 8.96 | 13.2 | 20.6 | | | | | | |
| 85 | 7.95 | 6.87 | 4.34 | 2.03 | 1.72 | 5.74 | 9.55 | 2.70 | 0.43 | 0.49 | 1.18 | 4.11 | | | | | | |
| 90 | 0.00 | 0.00 | 0.00 | 0.00 | 0.00 | 0.00 | 0.00 | 0.00 | 0.00 | 0.00 | 0.00 | 0.00 | | | | | | |
| 95 | 0.00 | 0.00 | 0.00 | 0.00 | 0.00 | 0.00 | 0.00 | 0.00 | 0.00 | 0.00 | 0.00 | 0.00 | | | | | | |
| 100 | 0.00 | 0.00 | 0.00 | 0.00 | 0.00 | 0.00 | 0.00 | 0.00 | 0.00 | 0.00 | 0.00 | 0.00 | | | | | | |
| 105 | 0.00 | 0.00 | 0.00 | 0.00 | 0.00 | 0.00 | 0.00 | 0.00 | 0.00 | 0.00 | 0.00 | 0.00 | | | | | | |
| 110 | 0.00 | 0.00 | 0.00 | 0.00 | 0.00 | 0.00 | 0.00 | 0.00 | 0.00 | 0.00 | 0.00 | 0.00 | | | | | | |
| 115 | 0.00 | 0.00 | 0.00 | 0.00 | 0.00 | 0.00 | 0.00 | 0.00 | 0.00 | 0.00 | 0.00 | 0.00 | | | | | | |
| 120 | 0.00 | 0.00 | 0.00 | 0.00 | 0.00 | 0.00 | 0.00 | 0.00 | 0.00 | 0.00 | 0.00 | 0.00 | | | | | | |
| 125 | 0.00 | 0.00 | 0.00 | 0.00 | 0.00 | 0.00 | 0.00 | 0.00 | 0.00 | 0.00 | 0.00 | 0.00 | | | | | | |
| 130 | 0.00 | 0.00 | 0.00 | 0.00 | 0.00 | 0.00 | 0.00 | 0.00 | 0.00 | 0.00 | 0.00 | 0.00 | | | | | | |
| 135 | 0.00 | 0.00 | 0.00 | 0.00 | 0.00 | 0.00 | 0.00 | 0.00 | 0.00 | 0.00 | 0.00 | 0.00 | | | | | | |
| 140 | 0.00 | 0.00 | 0.00 | 0.00 | 0.00 | 0.00 | 0.00 | 0.00 | 0.00 | 0.00 | 0.00 | 0.00 | | | | | | |
| 145 | 0.00 | 0.00 | 0.00 | 0.00 | 0.00 | 0.00 | 0.00 | 0.00 | 0.00 | 0.00 | 0.00 | 0.00 | | | | | | |
| 150 | 0.00 | 0.00 | 0.00 | 0.00 | 0.00 | 0.00 | 0.00 | 0.00 | 0.00 | 0.00 | 0.00 | 0.00 | | | | | | |
| 155 | 0.00 | 0.00 | 0.00 | 0.00 | 0.00 | 0.00 | 0.00 | 0.00 | 0.00 | 0.00 | 0.00 | 0.00 | | | | | | |
| 160 | 0.00 | 0.00 | 0.00 | 0.00 | 0.00 | 0.00 | 0.00 | 0.00 | 0.00 | 0.00 | 0.00 | 0.00 | | | | | | |
| 165 | 0.00 | 0.00 | 0.00 | 0.00 | 0.00 | 0.00 | 0.00 | 0.00 | 0.00 | 0.00 | 0.00 | 0.00 | | | | | | |
| 170 | 0.00 | 0.00 | 0.00 | 0.00 | 0.00 | 0.00 | 0.00 | 0.00 | 0.00 | 0.00 | 0.00 | 0.00 | | | | | | |
| 175 | 0.00 | 0.00 | 0.00 | 0.00 | 0.00 | 0.00 | 0.00 | 0.00 | 0.00 | 0.00 | 0.00 | 0.00 | | | | | | |
| 180 | 0.00 | 0.00 | 0.00 | 0.00 | 0.00 | 0.00 | 0.00 | 0.00 | 0.00 | 0.00 | 0.00 | 0.00 | | | | | | |

C Range: 0 - 360DEG
C Interval: 30.0DEG
Test Speed: HIGH
Temperature:25.3℃
Operators:zoe
Test Date:2025-1-21

Range: 0 - 180DEG
Interval: 1.0DEG
Test System:EVERFINE GO-SPEX500_V1 SYSTEM V2.00.461
Humidity:65.0%
Test Distance:3.160m [K=1.0000]
Remarks: LAMP:HL-A-2835D90W-2-S1-08L-HR5 Ra:90
PC:PL-0101B+PM-0145B
NOT DRIVER:48V
30minutes warm-up